



IAS Infinity Architectural Suspended

Linear architectural line

Features and Specifications

Construction:

- Mitered edge eliminates end cap seam creating a perfectly smooth edge and clean finish
- Extruded aluminum suspended fixture
- Cable hangers are moveable along the length of the fixture
- Customize your design with any angle
- Plug-and-play wiring for continuous runs
- Frosted acrylic diffuser offers high light transmission of over 85%
- Multi-Color Tuning LED board arrays – Field selectable 3000K, 3500K, or 4000K
- Endless geometric shapes (ex: triangles hexagons, octagons, etc.)

Listing & Ratings:

- All electrical components are U.L. listed or recognized
- All fixtures are U.L. Certified and Union made in the USA
- Meets Buy America Act (ARRA)

Driver:

- Universal voltage 120-277V, 0-10V dimming to 1% standard
- Custom driver tuning available for specific lumen requirements
- Lutron dimming optional

Warranty:

- 5 years - part replacement only (see our terms & conditions page at www.lamarled.com for details)

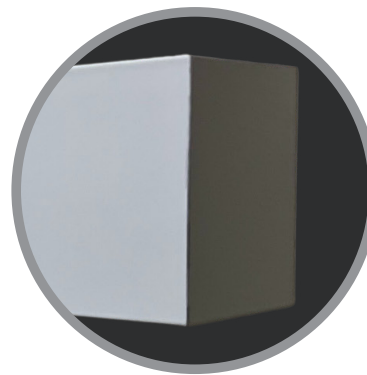
**AVAILABLE FOR
PREORDER**

INFINITY

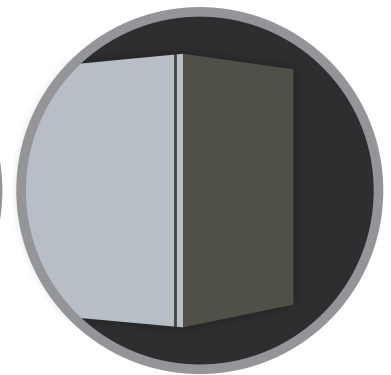


Our edge is that we have no seam

Lamar LED's mitered edge vs. everyone else's end cap



**Lamar LED'S
Infinity edge**



**Standard extrusion
end cap**



Ordering Guide / Example

IAS-48-M-MCT

IAS - Suspended Module

Series	Length	Width	Power	CCT	General Options
IAS	24 = 2' nominal 48 = 4' nominal 72 = 6' nominal 96 = 8' nominal CS = custom shape CA = custom angle	2 = 2.5"	L = Low M = Medium H = High	MCT = Field Selectable CCT 3000K, 3500K or 4000K TW = Tuneable White 2700K-6500K (Min Qty Applies)	DTD = 0-10V Dim to Dark 90 = 90 CRI BLK = Black metal construction AC6 = 6ft adjustable aircraft cable kit AC8 = 8ft adjustable aircraft cable kit AC10 = 10ft adjustable aircraft cable kit

4ft AC cable kits and pre-wired power drop included
as standard, other lengths available

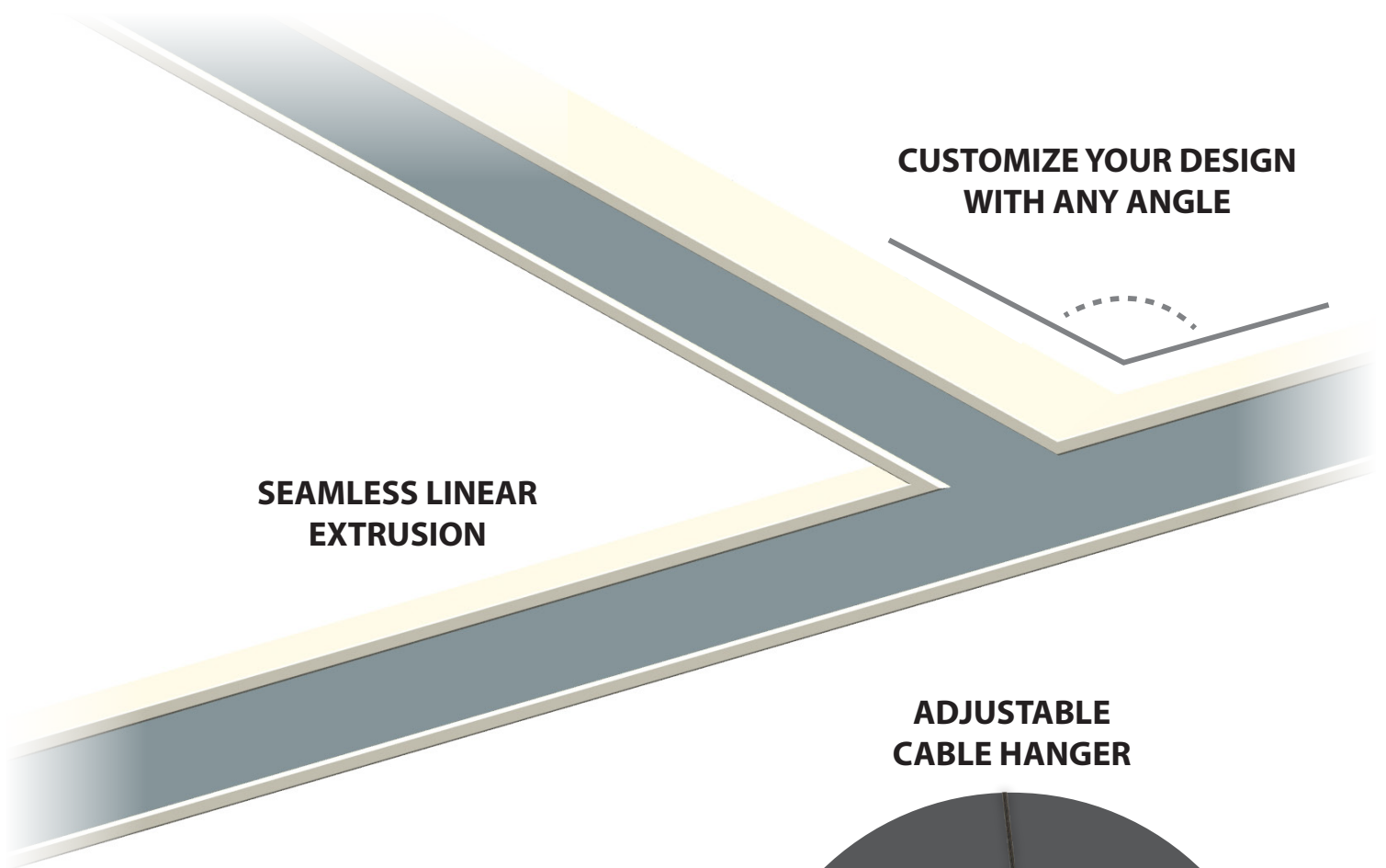
Specifications subject to change without notice - Rev 0722



INFINITY

IAS Infinity Architectural Suspended

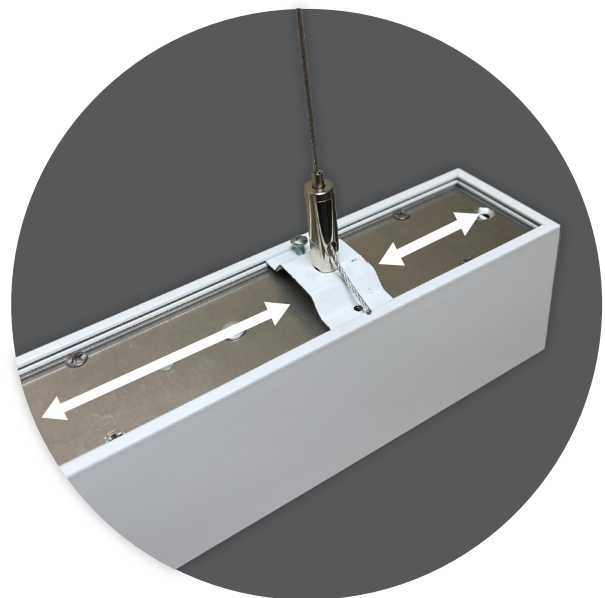
Linear architectural line



Performance per Linear Foot at 4000K

Nominal Lumen Output	Input Watts*	Efficacy
400 lm/ft	3.6 W/ft	110 lm/W
500 lm/ft	4.6 W/ft	109 lm/W
750 lm/ft	7.0 W/ft	106 lm/W

* Based on a 4 foot luminaire using one driver
Please consult factory for custom lumen output and wattage.



Specifications subject to change without notice - Rev 0722